



## SPECIFICATIONS

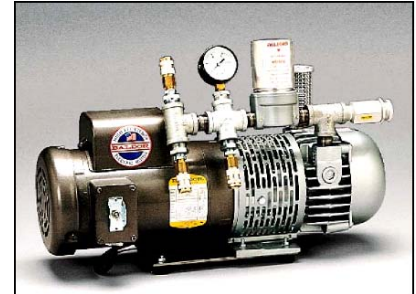
Product Description: **AMBIENT AIR PUMP A-1500 TE**  
Part Number: **9832**  
Style: **ROTARY VANE**

### GENERAL DESCRIPTION:

Portable air source for up to three full or half face respirator users, or two hood users. Solid performance in multi-worker applications, cleaning, sanding or chemical handling operations.

### CONSTRUCTION:

- Rigid metal base & housing with four rubber feet
- Brass & galvanized steel plumbing
- Quick-connect Rectus (OBAC) fittings (other fittings available upon request)
- Adjustable brass pressure relief valve
- Pressure gauge 0-1 5psi
- Fan guard
- Powder coated gray



### PUMP:

Type: Oil-less, rotary vane, direct driven.  
Vaness: Carbon construction (4ea/ replaceable) (3.500" X 1.344" X 0.188")  
Inlet Filter: 50 micron felt material  
Exhaust Filter: 0.3 Micron HEPA  
Working Pressure: 2-12 psi (15 psi max)  
Performance: 0-20 CFM (adjusted via pressure relief valve)  
Airline length: 100 Feet maximum, from pump to respirator. (sold separately)  
Noise level: At Pump: 95 dB  
At 6 feet: 85 dB  
At 10 feet: 78 Db

### MOTOR:

Type: 1 ½ HP UL Listed, CSA Certified, TEFC continuous duty  
Volts: 115V/230V AC Single Ø, 60 Hz  
Current Draw: 16 A @115V (8.4 A @ 230V)  
RPM: 1725  
NEMA Nom Eff: 72.0  
Cord: 8' 14/3 AWG SJTW-A 300V Neoprene medium duty  
Switch: Toggle, external ON/OFF  
Plug: NEMA L5-15P (L6-20P in 230V configuration) 3 prong

### DIMENSIONS:

Length	Width	Height	Weight
23 ½"	9 ½"	15 ½"	97 lbs.



## SPECIFICATIONS

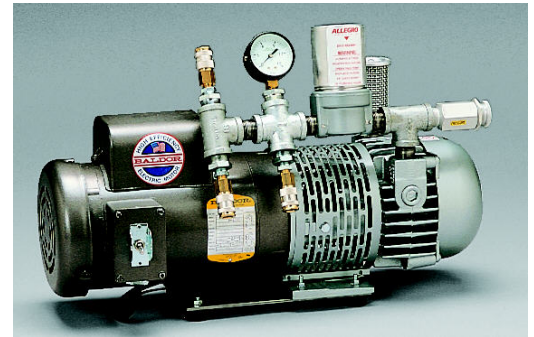
Product Description: **AMBIENT AIR PUMP A-1500 EX**  
Part Number: **9833**  
Style: **ROTARY VANE, EXPLOSION PROOF**

### GENERAL DESCRIPTION:

Portable explosion proof air source for up to three full or half face respirator users, or two hood users. Solid performance in multi-worker applications, cleaning, sanding or chemical handling operations.

### CONSTRUCTION:

- Rigid metal base & housing with four rubber feet
- Brass & galvanized steel plumbing
- Quick-connect Rectus (OBAC) air fittings
- Adjustable brass pressure relief valve
- Pressure gauge 0-15 psi
- Fan guard
- Powder coated gray



### PUMP:

Type: Oil-less, rotary vane, direct driven  
Vaness: Carbon construction (4ea/ replaceable) (3.500" X 1.344" X 0.188")  
Inlet Filter: 50 micron felt material  
Exhaust Filter: 0.3 Micron HEPA  
Working Pressure: 2-12 psi (15 psi max)  
Performance: 0-15 CFM at 60 Hz (adjusted via pressure relief valve)  
Airline length: 100 Feet maximum, from pump to respirator (sold separately)  
Noise level: At Pump: 95 dB, at six feet: 85 dB, at 10 feet: 78 dB

### MOTOR:

Type: 1 1/2 HP UL Listed, CSA Certified, TEFC continuous duty  
Volts: 1 15V/230 VAC, Single Ø, 60 Hz  
Current Draw: 16 A @ 1 15V (8.4 A @ 230V)  
RPM: 1725  
NEMA Nom Eff: 75.0  
Cord: 12' 12/3C AWG SJOOW-A 300V neoprene medium duty  
Plug: 20A 125V AGP Type, hazardous location

### HAZARDOUS LOCATION:

Class: I	Class: II
Divisions: 1 & 2	Division: 1 & 2
Group: D	Groups: F & G

### DIMENSIONS:

Length	Width	Height	Weight
27"	10"	15"	122 lbs.