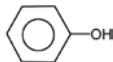
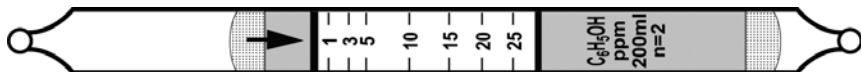


Phenol C₆H₅OH



No. H-10-139-05



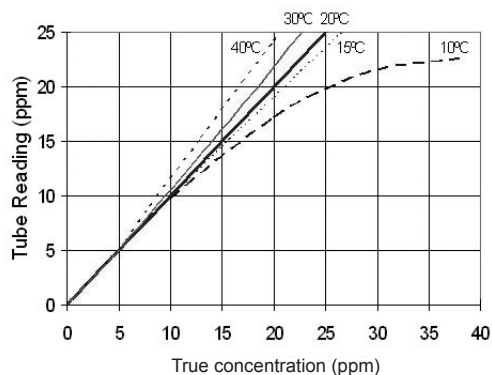
| | Extended Range | Standard Range | Extended Range | Extended Range |
|---------------------|----------------|----------------|----------------|----------------|
| Range (ppmv) | 0.5 - 11 | 1 - 25 | 2.4 - 60 | 7 - 180 |
| No. of Pump Strokes | 4 | 2 | 1 | 0.5 |
| Sample Volume (mL) | 400 | 200 | 100 | 50 |
| Sample Time (min) | 4 x 1.5 | 2 x 1.5 | 1.5 | 1.0 |
| Correction Factor | 0.45 | 1 | 2.4 | 7.2 |

Precision (Relative Standard Deviation)*: ≤±20%

Linearity with No. of Pump Strokes: r² = 0.996

Humidity:

| % Relative Humidity | 10% | 30% | 50% | 90% |
|---------------------|-----|------|-----|-----|
| Correction Factor | 1.0 | 1.25 | 1.6 | 1.8 |



DATA SHEETS

Temperature Range: 10 - 40°C (50 - 104°F)

Storage Life: 1.5 years in darkness at 5 - 25°C (40 - 77°F). Refrigeration preferred.

Color Change: Pale Yellow → Gray

Reaction Principle: C₆H₅OH + Ce(NH₄)₂(NO₃)₆ → Cerium-Phenol complex

Continued on next page

Phenol C₆H₅OH (continued) No. H-10-139-05

| Cross-sensitivity: Substance | Concentration (ppmv) | Apparent Reading* |
|---------------------------------|-------------------------|----------------------|
| H ₂ S | 100 | 0 |
| NH ₃ | 500 | 0 |
| NO | 400 | 0 |
| NO ₂ | 400 | 0 |
| SO ₂ | 200 | 0 |
| CH ₄ | 25000 | 0 |
| CO ₂ | 5000 | 0 |
| CO | 500 | 0 |
| Formaldehyde (HCHO) | 500 | 0 |
| Acetone | 2000 | 0 |
| Isopropanol | 2000 | 0 |
| Isobutylene | 100 | 0 |
| n-Hexane | 2000 | 0 |
| Benzene | 2000 | 0 |
| Toluene | 2000 | 0 |
| Styrene | 2000 | 0 |

* Data based on Honeywell pumps and tubes used in standard range.