

Information Data Sheet

Detector Tube H₂O-HP(mg/m³)

Part No. (US): 804438

Part No. D5085849

1. Application

Detection of water vapour (H₂O) in compressed air.

2. Sampling Device

Monitoring set for compressed air, Uniphos Airstester HP, observe included instruction for use.

3. Measuring Range

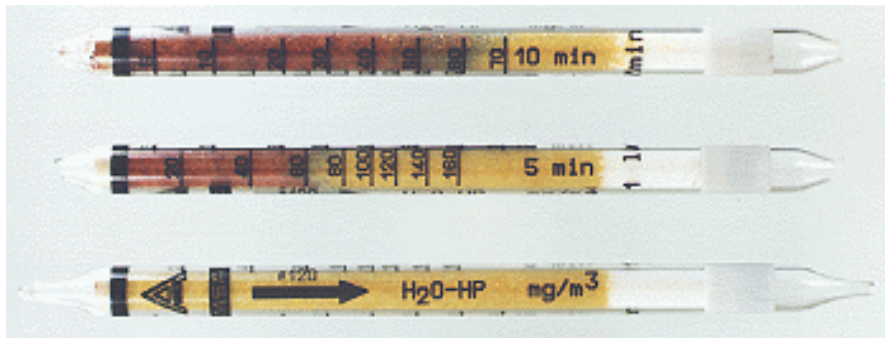
20 mg/ m³ ... 160 mg/ m³ water vapor for a 5 L sample.

5 mg/ m³ ... 70 mg/ m³ water vapor for a 10 L sample.

4. Chemical Reaction and Color Change

Precipitation of selenium from selenium/sulfuric acid by water.

Color change: Yellow → Brown or brown/green.



5. Influence of Temperature

• Detector tubes can be used between 0 °C and 35 °C (32 °F and 95 °F).

The calibration scales on detector tube are exactly valid if tubes have a temperature of 20 °C (68 °F) during measurement. If detector tube temperature deviates from 20 °C (68 °F), multiply reading (mg/ m³) with appropriate correction factor (see table).

Temperature of detector tube (°C)	0	5	10	15	20	25	30	35
Temperature of detector tube (°F)	32	41	50	59	68	77	86	95
Correction factor	1.85	1.55	1.35	1.17	1.00	0.85	0.70	0.57

Normally, detector tube temperature is equivalent to ambient temperature.

6. Interferences and Cross Sensitivities

a) No interference from:

– hydrogen, methane, ethane, propane, carbon monoxide, carbon dioxide, mineralic oil (vapor and mist).

Manufactured By:

Uniphos Envirotronic Pvt. Ltd (100% EOU)

P.O. Nahuli - 396 108

Tal. Umbergaon,

Dist: Valsad, Gujarat, India

Tel. : +91(260) 2730156 / 57 / 58

Fax : +91(260) 2730160

Marketing Office:

Uniphos Envirotronic Pvt. Ltd

Readymoney Terrace, 167,

Dr. Annie Besant Road, Worli,

Mumbai 400 018, India.

Tel. : +91(22) 6123 3500

Fax : +91(22) 2493 8826

+91 (22) 2497 8119

Manufactured By:

Uniphos Envirotronic Pvt. Ltd (100% EOU)

P.O. Nahuli - 396 108

Tal. Umbergaon,

Dist: Valsad, Gujarat, India

Tel. : +91(260) 2730156 / 57 / 58

Fax : +91(260) 2730160

gasdetection@uniphos-envirotronic.com

Marketing Office:

Uniphos Envirotronic Pvt. Ltd

Readymoney Terrace, 167,

Dr. Annie Besant Road, Worli,

Mumbai 400 018, India.

Tel. : +91(22) 6123 3500

Fax : +91(22) 2493 8826

+91 (22) 2497 8119

www.kwikdrawtubes.com

Rev.02/Jan17